

EXPANZO

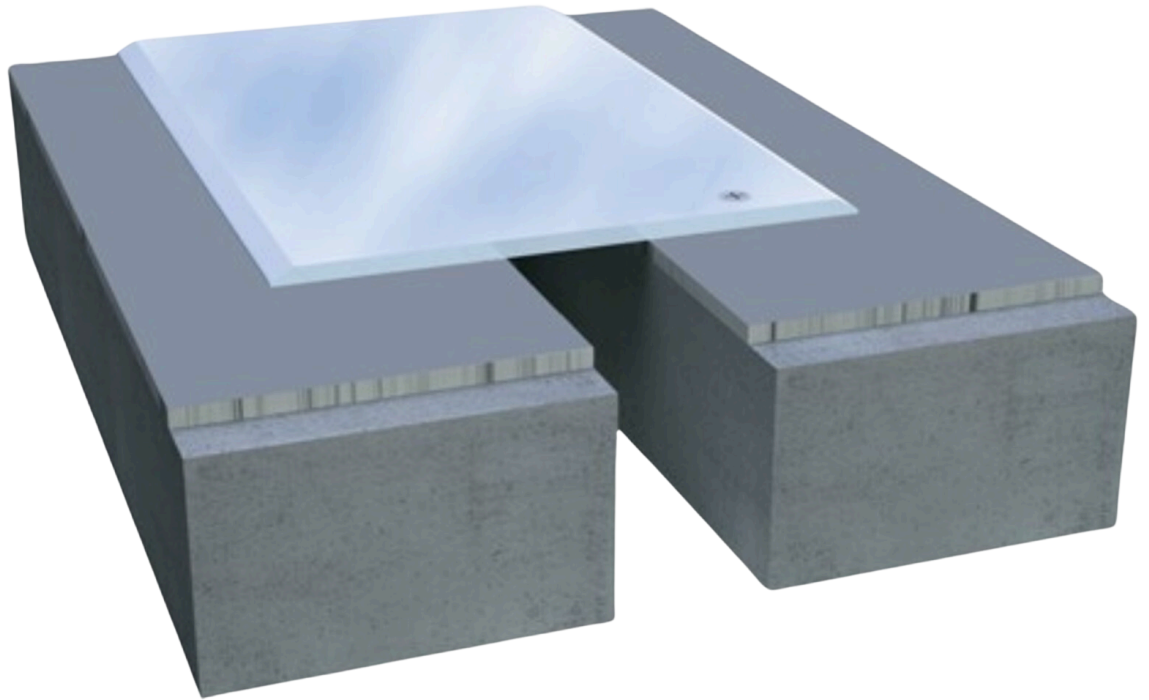
THE COMPLETE EXPANSION JOINT SYSTEMS

WWW.EXPANZO.COM



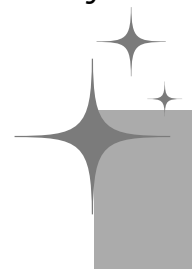
EXPANZO FRS SERIES

(Floor To Floor Expansion Joints-Surface Mounted)



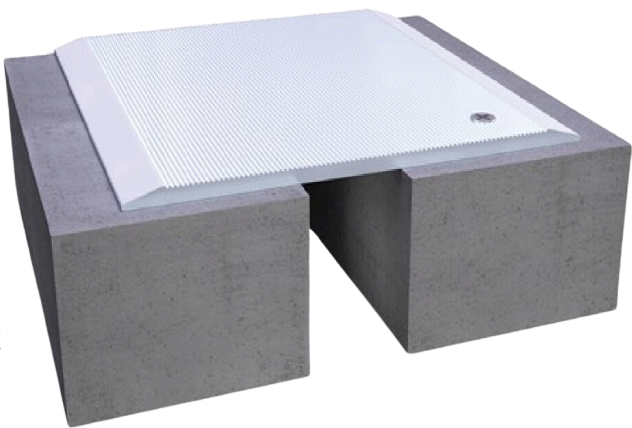
This product is ideal for effectively managing floor expansion gaps, providing a reliable solution to prevent structural issues caused by shifting or settling. It features a high-strength architectural aluminum base frame and cover, which are designed to protect waterproofing tapes from potential damage, ensuring the integrity of the waterproofing system over time. Additionally, the product ensures precise exposed coving for expansion joints, which is crucial for maintaining both functionality and aesthetic appeal in construction projects.

This product has gained significant popularity in the South Indian market, where it is recognized as a fast-moving item. It is in high demand among a variety of industry professionals, including builders, waterproofing contractors, and general contractors. Its versatility and reliability have made it a go-to solution for those involved in large-scale construction, making it an essential component for ensuring the durability and long-term performance of expansion joint systems.

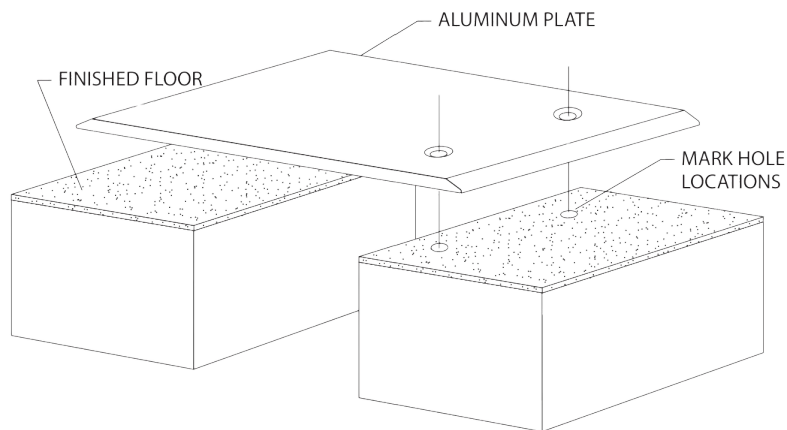


FLOOR TO FLOOR EXPANSION JOINTS-
SURFACE MOUNTED

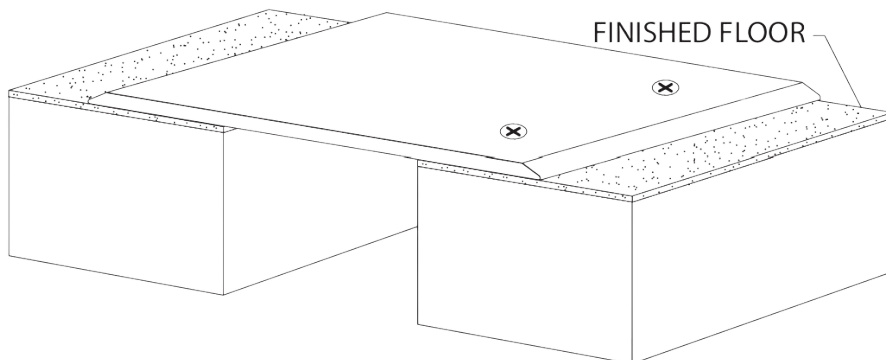
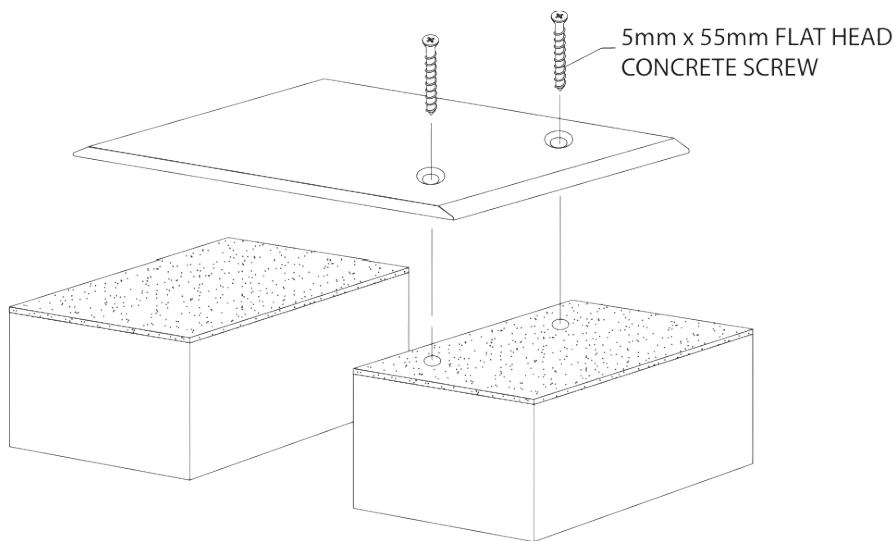
expansion joint system is designed with beveled edges for pedestrian safety and easy installation. The perfect economical solution for retrofit and surface mount installations.



APPLICATION AREA	INTERIOR AND EXTERIOR FLOORS
INSTALLATION TYPE	SURFACE MOUNTED
LOAD CAPACITY	HEAVY VEHICULAR TRAFFIC
SUITABLE FOR	RESIDENTIAL,COMMERCIAL PARKINGS PODIUM,DRIVE WAY, STADIUM
MATERIAL	FULLY ALUMINIUM
THICKNESS	3MM & 4 MM
SIZE	150MM to 500 MM WIDTH
COVER FINISH	MILL FINISH
OPTIONAL VAPOR BARRIER	EASY TO INSTALL



Install the architectural joint system on a leveled, finished floor. This may require grinding or applying a leveling compound on top of the substrate to create a smooth mounting surface



- Trim the aluminum plates to the required length.
- Position the plates over the structural gap.
- For floor-to-floor applications, ensure the plate is centered over the structural gap, with the pre-drilled mounting holes aligned on one side.
- Mark the locations of the pre-drilled holes on the substrate.
- Using a 1/8" (3mm) drill bit, drill into the marked locations on the substrate to a depth of 2-3/8" (60mm).
- Secure the plates in place by aligning them over the drilled holes and fastening them with flat head Tapcon screws.
- Clean the exposed surfaces thoroughly using a non-solvent cleaner.

Thank
You

The text "Thank You" is written in a black, elegant cursive script. The word "Thank" is on the top line, and "You" is on the line below it. The text is centered horizontally. Behind the text, there are several overlapping, wavy, organic shapes in shades of pink and light blue, creating a soft, artistic background.

THE UNFOLDING JOURNEY CONTINUES TO REVEAL
NEW OPPORTUNITIES AND CHALLENGES AT EVERY
STEP

